



2012-13 Aerial Photos

Aerial 1 : Stanwell Recycling



Page 109



2012-13 Aerial Photos

Aerial 2 : Stanwell Recycling, Stanwell



Figure 1 : Site Office and Weighbridge Area



Figure 2 : Vehicle Parking and Maintenance Area



Figure 3 : Typical Recycling Operations 1

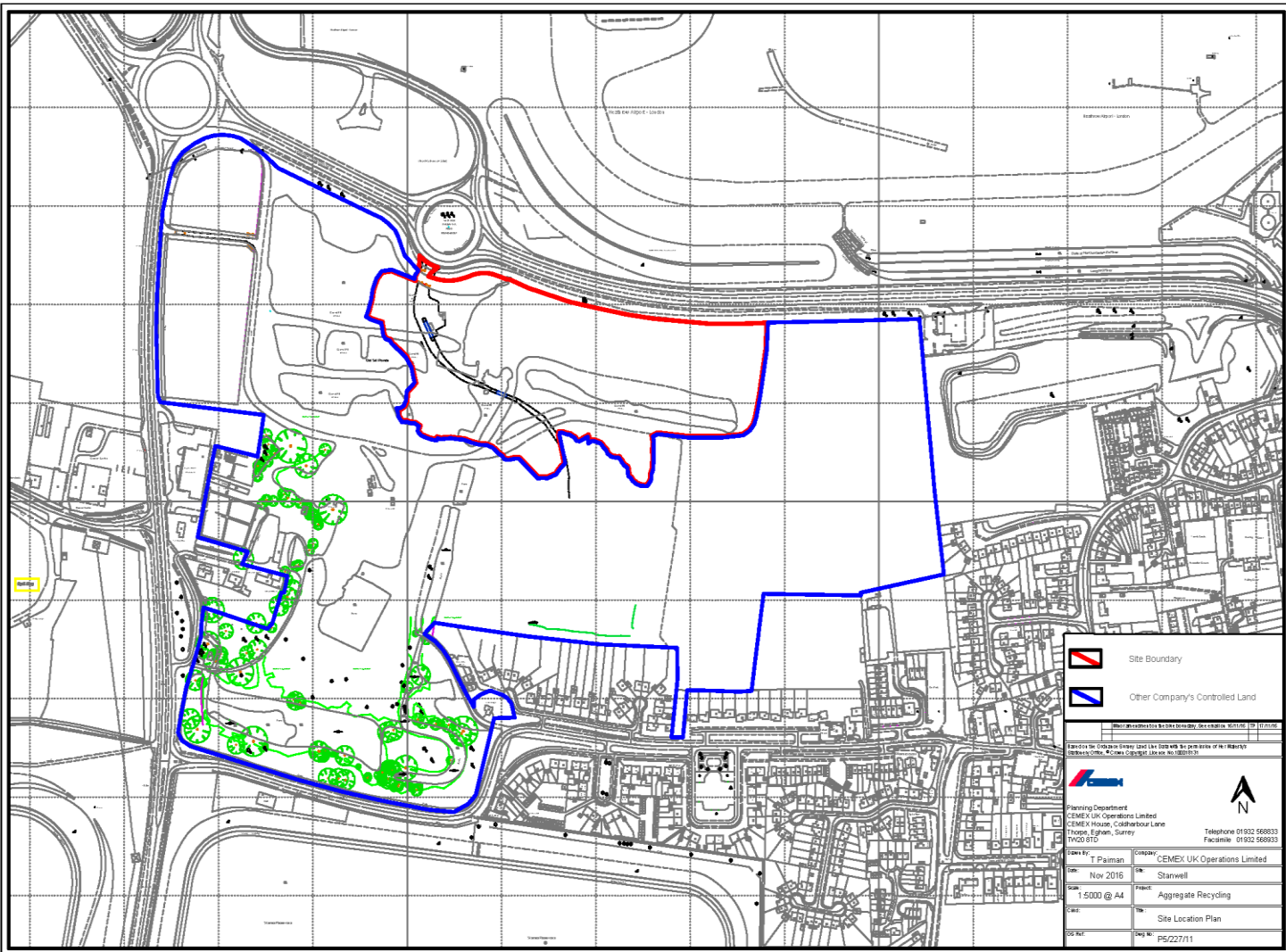


Figure 4 : Typical Recycling Operations 2





Figure 5 : Site Location Plan dated November 2016

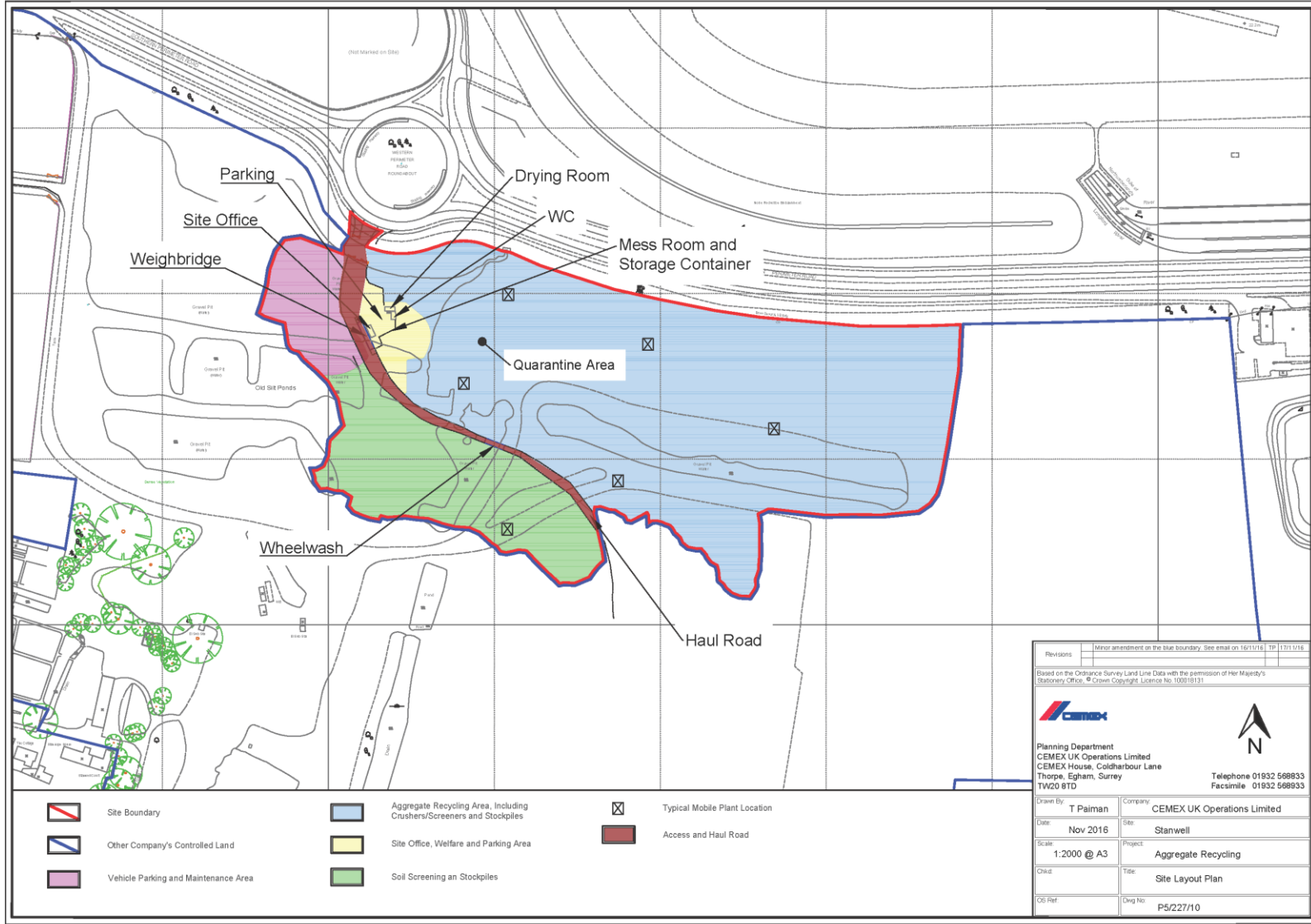


Page 115



Figure 6 : Site Layout Plan dated November 2016

Page 116



Revisions: Minor amendment on the blue boundary. See email on 16/11/16. TP 11/11/16.

Based on the Ordnance Survey Land Line Data with the permission of Her Majesty's Stationary Office. © Crown Copyright. Licence No. 100018131

Planning Department
CEMEX UK Operations Limited
CEMEX House, Coldharbour Lane
Thorpe, Egham, Surrey
TW20 8TD

Telephone 01932 588833
Facsimile 01932 588833

North Arrow

Drawn By: T Paiman	Company: CEMEX UK Operations Limited
Date: Nov 2016	Site: Stanwell
Scale: 1:2000 @ A3	Project: Aggregate Recycling
Check:	Title: Site Layout Plan
Obj Ref:	Dwg No: P5/227/10